



WHITE PAPER

# Intro to Stereolithography 3D Printing

A comprehensive guide for professional users

Stereolithography (SLA) 3D printing has become vastly popular for its ability to produce high-accuracy, isotropic, watertight parts in a range of advanced materials with fine features and smooth surface finish. In this white paper, learn how SLA technologies work, why thousands of professionals use this process today, and what you need to know to explore how SLA 3D printing can benefit your work.

## Contents

Introduction . . . . .	<b>3</b>
What is Stereolithography 3D Printing? . . . . .	<b>4</b>
The State of Stereolithography, Yesterday and Today . . . . .	<b>6</b>
Why Choose SLA 3D Printing? . . . . .	<b>9</b>
SLA 3D Printing Applications . . . . .	<b>14</b>
Bringing SLA In-House . . . . .	<b>16</b>
Get Started With SLA 3D Printing . . . . .	<b>18</b>

# Introduction

Advancements in 3D printing continue to change the way businesses approach prototyping and production. As the technology becomes more accessible and affordable and hardware and materials advance to match market opportunities and demands, designers, engineers, and beyond are integrating 3D printing into workflows across development cycles. Across industries, 3D printing is helping professionals cut outsourcing costs, iterate faster, optimize production processes, and even unlock entirely new business models.

*Across industries, 3D printing is helping professionals cut outsourcing costs, iterate faster, optimize production processes, and even unlock entirely new business models.*

Stereolithography (SLA) 3D printing in particular has undergone significant changes. Traditionally, SLA machines have been monolithic and cost-prohibitive, requiring skilled technicians and costly service contracts. Today, small format desktop printers produce industrial-quality outputs, at substantially more affordable price points and with unmatched versatility.

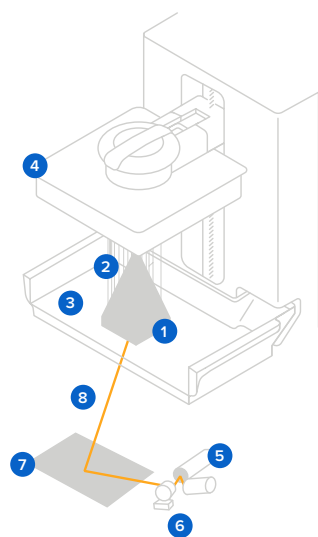
SLA 3D printing has become vastly popular because of its ability to produce high-accuracy, isotropic, watertight parts in a range of advanced materials with fine features and smooth surface finish. Today, Formlabs is driving the next phase in the technology's evolution with a new approach: Low Force Stereolithography (LFS) 3D printing.

In this white paper, learn more about how stereolithography printing technologies work and why thousands of professionals use this process today, along with a walkthrough of the basic SLA 3D printing ecosystem and workflow.

## What is Stereolithography 3D Printing?

Stereolithography belongs to a family of additive manufacturing technologies known as vat photopolymerization. These machines are all built around the same principle, using a light source—a laser or projector—to cure liquid resin into hardened plastic. The main physical differentiation lies in the arrangement of the core components, such as the light source, the build platform, and the resin tank.

SLA 3D printers use light-reactive thermoset materials called “resin.” When SLA resins are exposed to certain wavelengths of light, short molecular chains join together, polymerizing monomers and oligomers into solidified rigid or flexible geometries.



### Upside-Down (Inverted) SLA

- 1 Printed Part
- 2 Supports
- 3 Resin
- 4 Build Platform
- 5 Laser
- 6 Galvanometers
- 7 X-Y Scanning Mirror
- 8 Laser Beam
- 9 Resin Tank

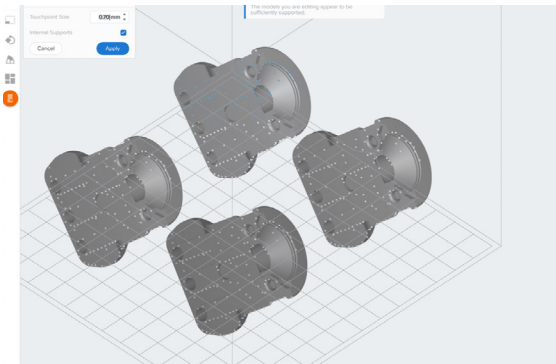
A graphic representation of the basic mechanics of stereolithography 3D printing.

*SLA parts have the highest resolution and accuracy, the sharpest details, and the smoothest surface finishes of all 3D printing technologies, but the main benefit of SLA lies in its versatility.*

SLA parts have the highest resolution and accuracy, the sharpest details, and the smoothest surface finishes of all 3D printing technologies, but the main benefit of SLA lies in its versatility. Material manufacturers have created innovative SLA resin formulations with a wide range of optical, mechanical, and thermal properties to match those of standard, engineering, and industrial thermoplastics.

Compare stereolithography 3D printing to [two other common technologies for producing plastic parts](#): fused deposition modeling (FDM) and selective laser sintering (SLS).

## The SLA 3D Printing Workflow



### 1 DESIGN

Use any CAD software or 3D scan data to design your model, and export it in a 3D printable file format (STL or OBJ). Each SLA printer includes [software](#) to specify printing settings and slice the digital model into layers for printing. Once setup is complete, the print preparation software sends the instructions to the printer via a wireless or cable connection.

**More advanced users may consider [specifically designing for SLA](#), or taking steps like [hollowing parts](#) to conserve material.**



### 2 PRINT

After a quick confirmation of the correct setup, the printing process begins and the machine can run unattended until the print is complete. In printers with a cartridge system, the material is automatically refilled by the machine.

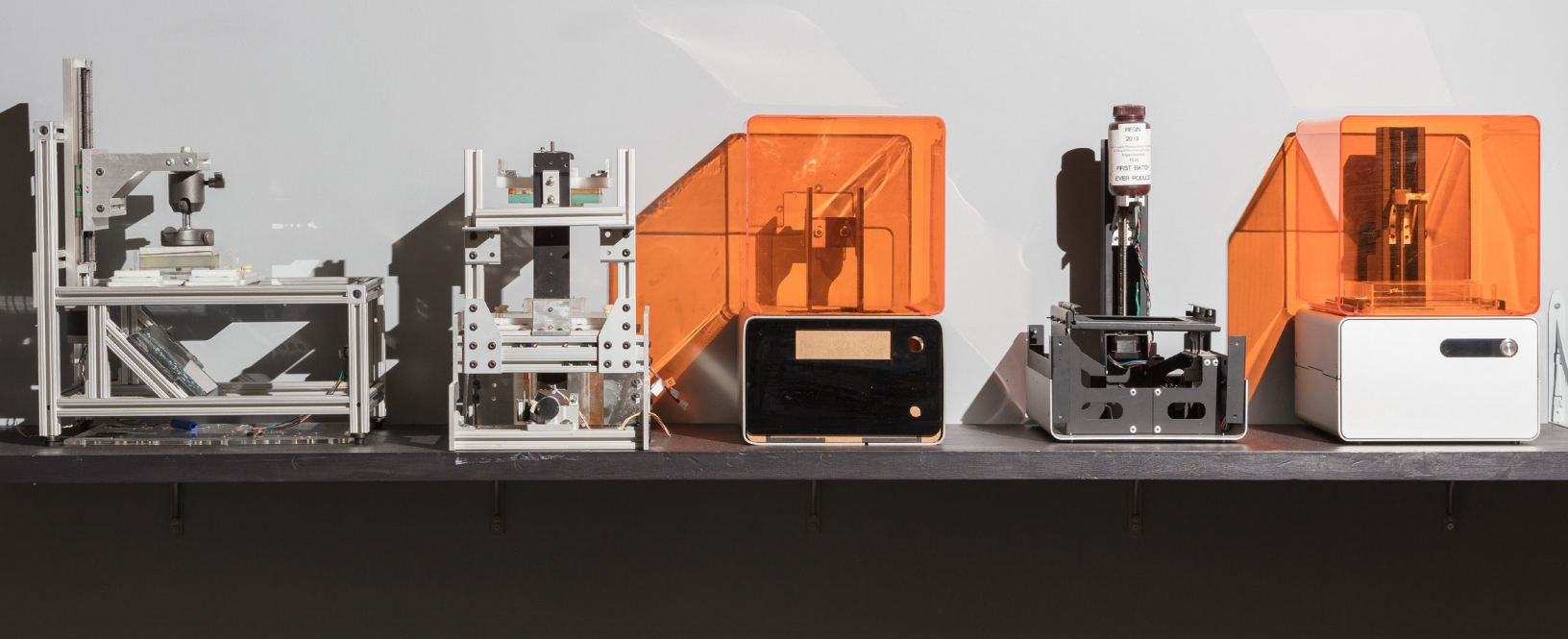
**An online [Dashboard](#) from Formlabs allows you to remotely manage printers, materials, and teams.**



### 3 POST-PROCESS

Once the printing is completed, parts require rinsing in isopropyl alcohol (IPA) to remove any uncured resin from their surface. After rinsed parts dry, some materials require [post-curing](#), a process which helps parts to reach their highest possible strength and stability. Finally, remove supports from the parts and sand the remaining support marks for a clean finish. SLA parts can be easily machined, [primed](#), [painted](#), and [assembled](#) for specific applications or finishes.

**Post-curing is particularly important for functional resins for engineering, and mandatory for some dentistry and jewelry materials and applications.**



▲ Prototypes of the Form 1, the first desktop SLA 3D printer.

## The State of Stereolithography, Yesterday and Today

### A Brief History

The SLA process first appeared in the early 1970s, when Japanese researcher Dr. Hideo Kodama invented the modern layered approach to stereolithography, using ultraviolet light to cure photosensitive polymers. The term stereolithography was coined by Charles (Chuck) W. Hull, who patented the technology in 1986 and founded the company 3D Systems to commercialize it. Hull described the method as creating 3D objects by successively “printing” thin layers of a material curable by ultraviolet light.

SLA 3D printing, however, was not the first 3D printing technology to gain widespread popularity. As patents began to expire at the end of the 2000s, the introduction of small format, desktop 3D printing widened access to additive manufacturing, with fused deposition modeling (FDM) first gaining adoption in desktop platforms.

While this affordable extrusion-based technology sparked the first wave of wide adoption and awareness of 3D printing, FDM machines did not satisfy the spectrum of professional needs—repeatable, high-precision results are crucial for professional applications, as are biocompatible materials in the dental industry and the ability to create fine features for industries like jewelry and applications like millifluidics.

### Desktop SLA Disrupts the Market

SLA soon followed FDM to the desktop, when Formlabs adapted the technology in 2011. Small format SLA brought the promise of high resolution 3D printing—previously limited to monolithic industrial systems—in a much smaller and more affordable setup with a wide range of print materials. These capabilities expanded access to 3D printing for a variety of custom and high precision applications across disciplines, including engineering, product design, and manufacturing, as well as dental, jewelry, and other industries.

In 2015, Formlabs released its next generation SLA printer, the Form 2, which became the industry-leading desktop 3D printer, with parts printed in the field ranging from affordable custom prosthetics to a customizable line of razor handles.

The Form 2 reset the conversation for SLA 3D printing, popularizing a “distributed” model of production, where companies can scale output incrementally, adding more small format printers as demand increases with the flexibility to print in different materials on each printer. The maturity of materials over time has only increased the usage of this model, as more advanced resins have unlocked applications beyond prototyping and into production and end-use parts across industries.

In 2019, Formlabs made another step change in the industry with [the launch of the Form 3 and Form 3L](#), two new hardware products that set a new standard for SLA with systems built on a completely new print process.

### **The Next Chapter of SLA: Low Force Stereolithography 3D Printing**

[Low Force Stereolithography \(LFS\)](#) technology is the next phase in SLA 3D printing, meeting the demands on today’s market for scalable, reliable, industrial-quality 3D printing.

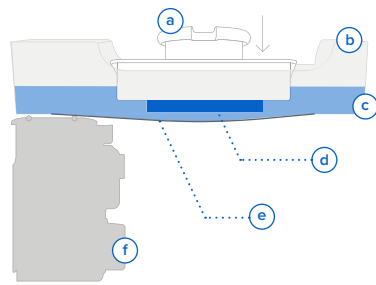
This advanced form of SLA drastically reduces the forces exerted on parts during the print process, using a flexible tank and linear illumination to deliver incredible surface quality and print accuracy. Lower print forces allow for light-touch support structures that tear away with ease, and the process opens up a wide range of possibilities for future development of advanced, production-ready materials.

Inverted SLA introduces peel forces that affect the print as it separates from the surface of the tank, so the build volume is limited and sturdy support structures are required. The Formlabs Form 2 is heavily calibrated to account for the forces of the peel process and produce high quality parts.

The Formlabs Form 3 and Form 3L are built on Low Force Stereolithography (LFS) 3D printing technology, an advanced form of SLA which uses a flexible tank and linear illumination to turn liquid resin into flawless prints.

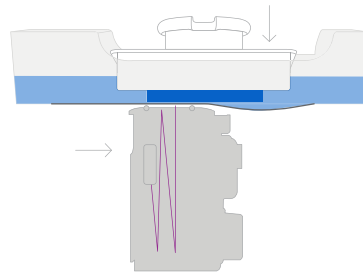


1 Build platform + part lowers into liquid resin

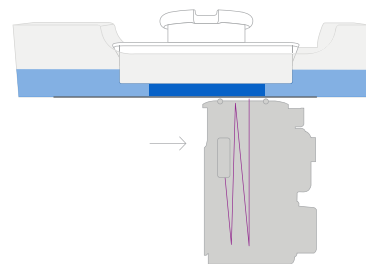


- (a) Build Platform
- (b) Tank
- (c) Printed Part
- (d) Liquid Resin
- (e) Film
- (f) LPU

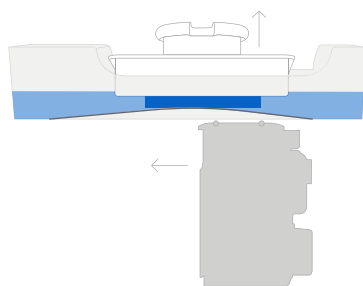
2 Rollers gently squeeze resin out from under the part to generate a thin, even layer of resin



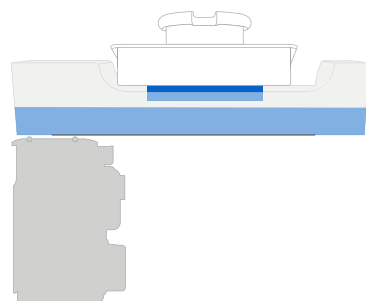
3 Layer is cured, film adheres to the cured material



4 Build platform lifts out of liquid resin gently pulling part away from flexible film layer



5 Film relaxes and is ready to print the next layer



LFS 3D printing drastically reduces the forces exerted on parts during the print process, using a flexible tank and linear illumination to deliver incredible surface quality and print accuracy. Learn more about how LFS works in [this deep dive video](#).



# Why Choose SLA 3D Printing?

Engineers, designers, manufacturers, and more choose SLA 3D printing for its fine features, smooth surface finish, ultimate part precision and accuracy, and mechanical attributes like isotropy, watertightness, and material versatility.

## Isotropy

Because 3D printing creates parts one layer at a time, completed prints may have variations in strength based on orientation of the part relative to the printing process, with different properties in X, Y, and Z axes.

Print processes like fused deposition modeling (FDM) are known for being anisotropic due to layer-to-layer differences created by the print process. This anisotropy limits the usefulness of FDM for certain applications, or requires more adjustments on the part geometry side to compensate for it.

In contrast, [SLA printing creates highly isotropic parts](#). Achieving part isotropy is based on a number of factors that can be tightly controlled by integrating material chemistry with the print process. During printing, resin components form covalent bonds, but layer to layer, the part remains in a semi-reacted "green state."

While in the green state, the resin retains polymerizable groups that can form bonds across layers, imparting isotropy and watertightness to the part upon final cure. On the molecular level, there is no difference between X, Y, or Z planes. This results in parts with predictable mechanical performance critical for applications like jigs and fixtures, end-use parts, and functional prototyping. .



Because they are isotropic, SLA printed parts like this [jig from Pankl Racing Systems](#) can withstand the variety of directional forces they undergo during high stress manufacturing operations.

## Watertightness

SLA printed parts are continuous, whether producing geometries with solid features or internal channels. This watertightness is important for engineering and manufacturing applications where air or fluid flow must be controlled and predictable. Engineers and designers use the watertightness of SLA to solve air and fluid flow challenges for automotive uses, biomedical research, and to validate part designs for consumer products like kitchen appliances.



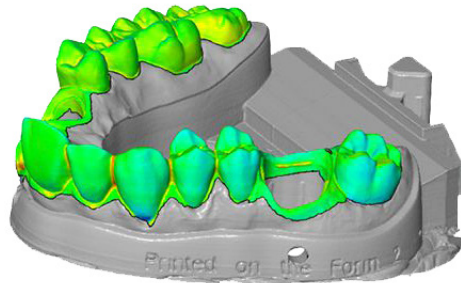
OXO relies on the watertightness of SLA printing to [create robust functional prototypes for products](#) with air or fluid flow, like this coffee maker.

## Accuracy and Precision

Industries from dental to manufacturing depend on SLA 3D printing to repeatedly create accurate, precise components. For a print process to produce accurate and precise parts, multiple factors must be tightly controlled.

Compared to machined accuracy, SLA 3D printing is somewhere between standard machining and fine machining. SLA has the highest tolerance of commercially available 3D printing technologies. Learn more about [understanding tolerance, accuracy, and precision](#) in 3D printing.

The combination of the heated resin tank and the closed build environment provides almost identical conditions for each print. Better accuracy is also a function of lower printing temperature compared to thermoplastic-based technologies that melt the raw material. Because stereolithography uses light instead of heat, the printing process takes place at close to room temperature, and printed parts don't suffer from thermal expansion and contraction artifacts.



◀ An example from the dental industry comparing a scanned component with the original CAD geometry, demonstrating the ability to maintain tight tolerances across an SLA printed part.

Low Force Stereolithography (LFS) 3D printing houses the optics inside a Light Processing Unit (LPU) that moves in the X direction. One galvanometer positions the laser beam in the Y direction, then directs it along across a fold mirror and parabolic mirror to deliver a beam that is always perpendicular to the build plane, so it is always moving in a straight line to provide even greater precision and accuracy, and allows for uniformity as hardware scales up to larger sizes, like Formlabs larger format SLA printer Form 3L. The LPU also uses a spatial filter to create a crisp, clean laser spot for greater precision.

The characteristics of individual materials are also important for ensuring a reliable, repeatable print process.



Formlabs [Rigid Resin](#) has a high green modulus, or modulus before post-curing, which means it's possible to print very thin parts with precision and a lower chance of failure.

## Fine Features and Smooth Surface Finish

SLA printing is considered the gold standard for smooth surface finish, with appearances comparable to traditional manufacturing methods like machining, injection molding, and extrusion.

This surface quality is ideal for applications that require a flawless finish and also helps reduce post-processing time, since parts can easily be sanded, polished, and painted. For example, [leading companies like Gillette use SLA 3D printing to create end-use consumer products](#), like 3D printed razor handles in their Razor Maker platform.

► Leading companies like Gillette use SLA 3D printing to [create end-use consumer products](#), like the 3D printed razor handles in their Razor Maker platform.

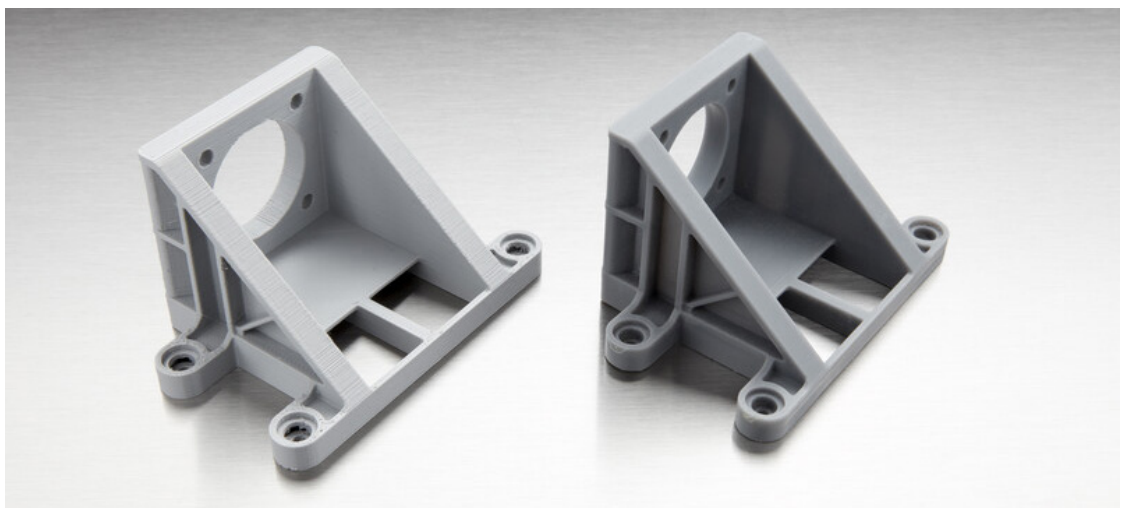


Z-axis layer height is commonly used to define the resolution of a 3D printer. This can be adjusted in between 25 and 300 microns on Formlabs SLA 3D printers, with a trade-off between speed and quality.

In comparison, FDM and SLS printers typically print Z-axis layers at 100 to 300 microns. However, a part printed at 100 microns on an FDM or SLS printer looks different from a part printed at 100 microns on an SLA printer. SLA prints have a smoother surface finish right out of the printer, because the outermost perimeter walls are straight, and the newly printed layer interacts with the previous layer, smoothing out the staircase effect. FDM prints tend to have clearly visible layers, whereas SLS has a grainy surface from the sintered powder.

The smallest possible detail is also much finer on SLA, given 85 micron laser spot size on the Form 3, in comparison with 350 microns on industrial SLS printers, and 250–800 micron nozzles on FDM machines.

► While FDM 3D printed parts tend to have visible layer lines and might show inaccuracies around complex features, parts printed on SLA machines have sharp edges, a smooth surface finish, and minimal visible layer lines.

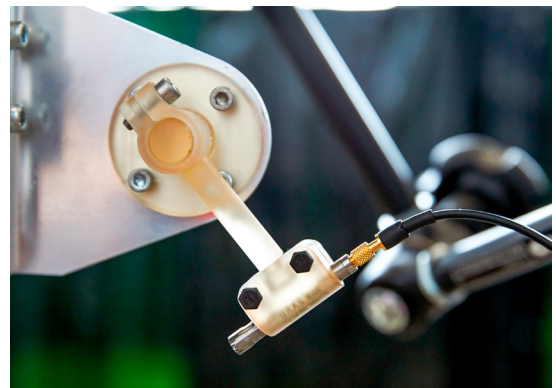


## Material Versatility

SLA resins have the benefit of a wide range of formulation configurations: materials can be soft or hard, heavily filled with secondary materials like glass and ceramic, or imbued with mechanical properties like high heat deflection temperature or impact resistance. Material range from industry-specific, like dentures, to those that closely match final materials for prototyping, formulated to withstand extensive testing and perform under stress.

In some cases, it's this combination of versatility and functionality that leads to companies to initially bring SLA in-house. After finding one application solved by a specific functional material, it's usually not long before more possibilities are uncovered, and the printer becomes a tool for leveraging the diverse capabilities of various materials.

For example, hundreds of engineers in the Design and Prototyping Group at the University of Sheffield Advanced Manufacturing Research Centre (AMRC) rely on open access to a fleet of 12 SLA 3D printers and a variety of [engineering materials](#) to support highly diverse research projects with industrial partners like Boeing, Rolls-Royce, BAE Systems, and Airbus. The team used [High Temp Resin](#) to 3D print washers, brackets, and a sensor mounting system that needed to withstand the elevated, and leveraged [Durable Resin](#) to create intricate custom springy components for a pick and place robot that automates composites manufacturing.



Engineers at AMRC use [a fleet of 12 SLA 3D printers](#) and a variety of engineering materials to print custom parts for diverse research projects, like brackets for a pick and place robot (left) and mounts for sensors in a high-temperature environment (right).

# SLA 3D Printing Applications

SLA 3D printing accelerates innovation and supports businesses across a wide range of industries, including engineering, manufacturing, dentistry, healthcare, education, entertainment, jewelry, audiology, and more.



## ENGINEERING AND PRODUCT DESIGN

Rapid prototyping with 3D printing empowers engineers and product designers to turn ideas into realistic proofs of concept, advance these concepts to high-fidelity prototypes that look and work like final products, and guide products through a series of validation stages toward mass production.

[Learn more →](#)



## MANUFACTURING

Manufacturers automate production processes and streamline workflows by prototyping tooling and directly 3D printing custom tools, molds, and manufacturing aids at far lower costs and lead times than with traditional manufacturing. This reduces manufacturing costs and defects, increases quality, speeds up assembly, and maximizes labor effectiveness.

[Learn more →](#)



## DENTAL

Digital dentistry reduces the risks and uncertainties introduced by human factors, providing higher consistency, accuracy, and precision at every stage of the workflow to improve patient care. 3D printers can produce a range of high-quality custom products and appliances at low unit costs with superior fit and repeatable results.

[Learn more →](#)



## EDUCATION

3D printers are multifunctional tools for immersive learning and advanced research. They can encourage creativity and expose students to professional-level technology while supporting STEAM curricula across science, engineering, art, and design.

[Learn more →](#)



## HEALTHCARE

Affordable, professional-grade desktop 3D printing helps doctors deliver treatments and devices customized to better serve each unique individual, opening the door to high-impact medical applications while saving organizations significant time and costs from the lab to the operating room.

[Learn more →](#)



## ENTERTAINMENT

High definition physical models are widely used in sculpting, character modeling, and prop making. 3D printed parts have starred in stop-motion films, video games, bespoke costumes, and even special effects for blockbuster movies.

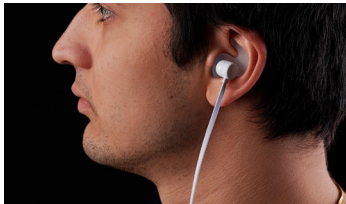
[Learn more →](#)



## JEWELRY

Jewelry professionals use CAD and 3D printing to rapidly prototype designs, fit clients, and produce large batches of ready-to-cast pieces. Digital tools allow for the creation of consistent, sharply detailed pieces without the tediousness and variability of wax carving.

[Learn more →](#)



## AUDIOLOGY

Hearing specialists and ear mold labs use digital workflows and 3D printing to manufacture higher quality custom ear products more consistently, and at higher volumes for applications like behind-the-ear hearing aids, hearing protection, and custom earplugs and earbuds.

[Learn more →](#)

## Bringing SLA In-House

Many companies start using 3D printing via outsourcing to service bureaus or labs. Outsourcing production can be a great solution when teams require 3D printing only occasionally, or for one-offs that require unique material properties or applications. Service bureaus can also provide advice on various materials and offer value-added services such as design or advanced finishing.

The main downsides of outsourcing are cost and lead time. Often, outsourcing is a gateway to bringing production in-house as needs ramp up. One of the greatest benefits of 3D printing is its speed compared to traditional manufacturing methods, which quickly diminishes when an outsourced part takes multiple days or even weeks to arrive. With growing demand and production, outsourcing also rapidly becomes expensive.

Because of the rise of affordable industrial-quality 3D printing, today, more and more companies choose to bring 3D printing in-house right away, vertically integrating into existing shops or labs, or in the workspaces of engineers, designers, and others who could benefit from translating digital designs into physical parts or who are involved in small batch production.

Small format, desktop SLA 3D printers are great when you need parts quickly. Depending on the number of parts and printing volume, investment into a small format 3D printer can break even within months. Plus, with small format machines, it's possible to pay for just as much capacity as a business needs and scale production by adding extra units as demand grows. Using multiple 3D printers also creates the flexibility to print parts in different materials simultaneously. Service bureaus can still supplement this flexible workflow for larger parts or unconventional materials.

### Fast Turnaround Time and Quick Design Changes

Fast turnaround time is a huge advantage to owning a desktop 3D printer. When working with a printing bureau, lead times, communication, and shipping all create delays. With a desktop 3D printer like the Form 3, parts are in-hand within hours, allowing designers and engineers to print multiple parts in one day, helping to iterate faster and drastically reduce product development time and quickly test mechanisms and assemblies avoid costly tool changes.

### Cost Savings

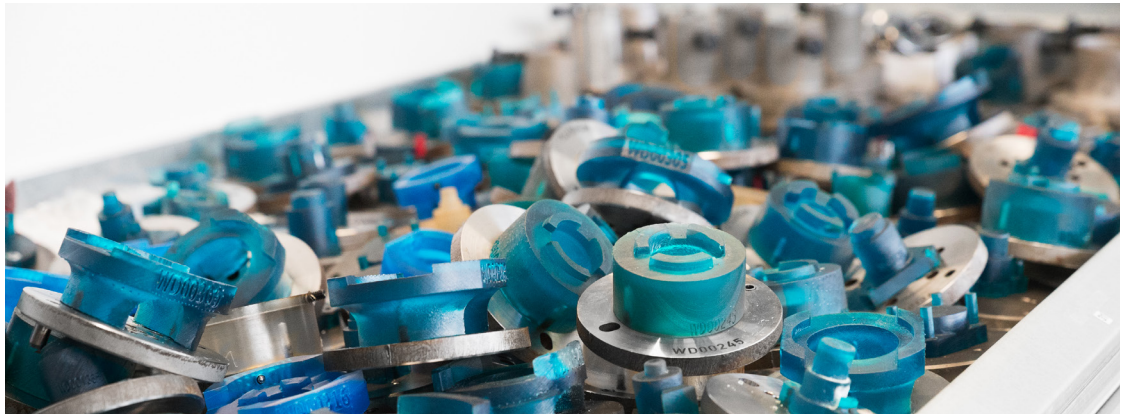
Owning a desktop 3D printer results in significant savings over 3D printing service bureaus and traditional machining, as these alternatives rapidly becomes expensive with growing demand and production.

For example, to fulfill tight production deadlines, a process engineer and team at Pankl Racing Systems introduced SLA 3D printing to [produce custom jigs and other low-volume parts](#) directly for their manufacturing line. While in-house SLA was initially met with skepticism, it turned out to be an ideal substitute to machining a variety of tools. In one case, it reduced lead time for jigs by 90 percent—from two to three weeks to less than a day—and decreased costs by 80-90 percent.



## Cost Comparison: Custom Jig at Pankl Racing Systems

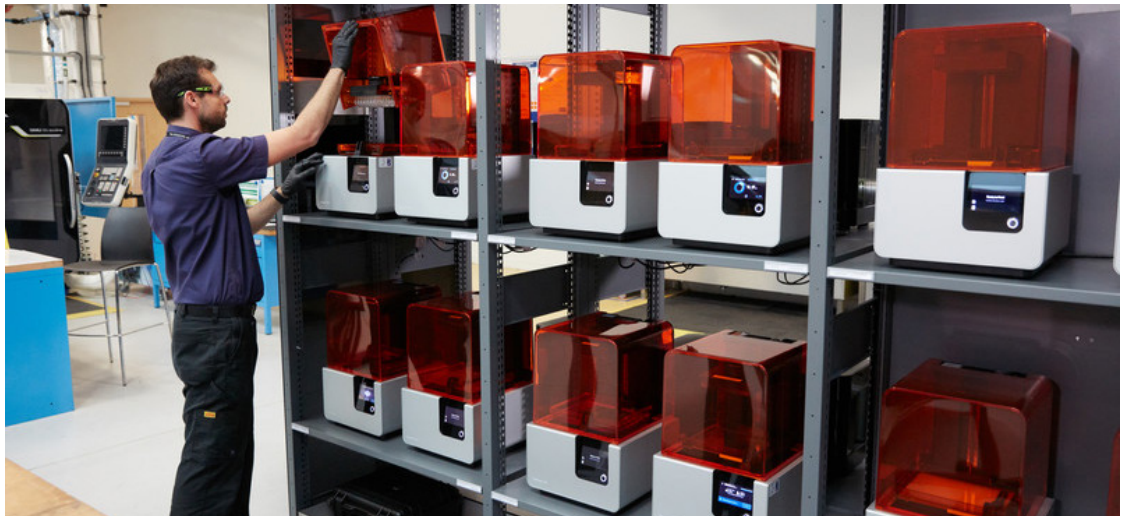
In-House SLA 3D Printing	5–9 hours	\$9–\$28
CNC Machining	2–3 weeks	\$45–\$340
Outsourced 3D Printing	5–9 hours	\$9–\$28



Pankl Racing Systems significantly reduced lead times and costs by 3D printing custom jigs in-house.


## Scale as You Grow

With small format machines, it's possible to pay for just as much capacity as a business needs and scale production by adding extra units as demand grows. Using multiple 3D printers also creates the flexibility to print parts in different materials simultaneously.



The Design and Prototyping Group at the University of Sheffield Advanced Manufacturing Research Centre (AMRC) runs an open-access additive manufacturing station with [a fleet of 12 Form 2 stereolithography \(SLA\) 3D printers](#) for hundreds of engineers working on diverse projects across the site.



formlabs   
**FORM 3** is here  
Flawless Prints, Every Time

**PRE ORDER NOW**

Formlabs offers SLA desktop 3D printers that are affordable and easy to use. Formlabs high-resolution 3D printers produce high-quality and highly detailed prints that are much better than that of plastic extrusion printers. Formlabs started out of MIT in 2011 with a commitment to bring sophisticated and innovated fabrication materials within the reach of engineers, designers and other creators all over the world.

[Click here to pre order now](#)

 **REDSTACK**<sup>®</sup>

1300 667 263

[solutions@redstack.com.au](mailto:solutions@redstack.com.au)

[www.redstackshop.com.au](http://www.redstackshop.com.au)